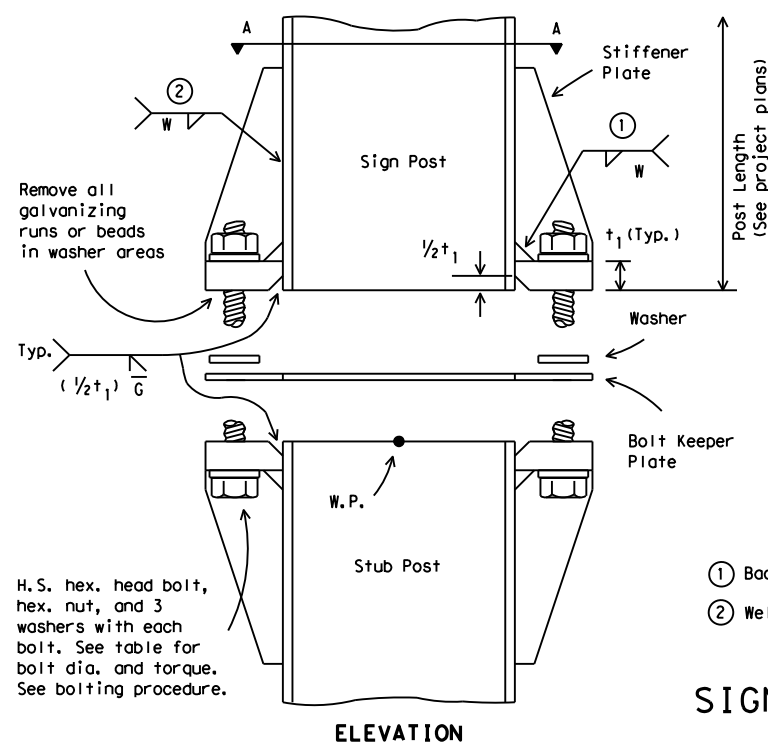
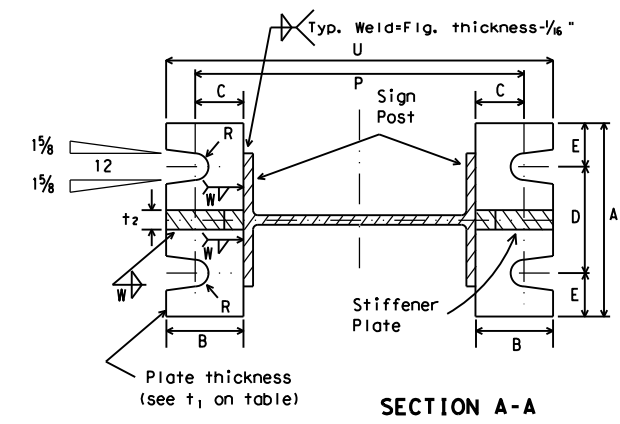


DISCLAIMER: The use of this standard is governed by the "Texas Engineering Practice Act". No warranty of any kind is made by TxDOT for any purpose whatsoever. TxDOT assumes no responsibility for the conversion of this standard to other formats or for incorrect results or damages resulting from its use.



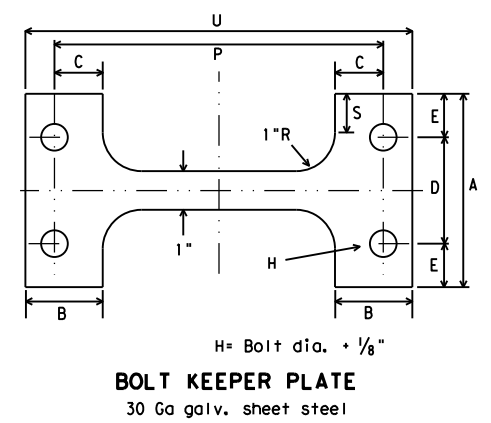
ELEVATION



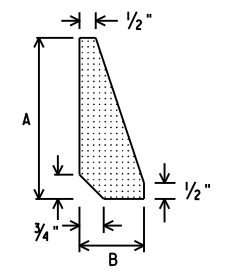
SECTION A-A

- ① Back up weld to be made before installing stiffener plate
- ② Weld W may be continued across clips to seal joint

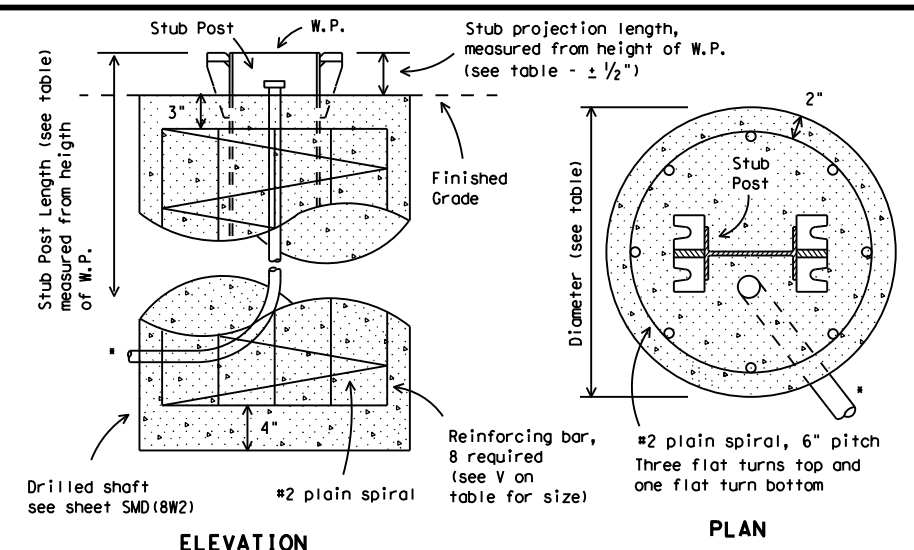
SIGN POST AND STUB POST
(For W Shapes)



BOLT KEEPER PLATE
30 Ga galv. sheet steel

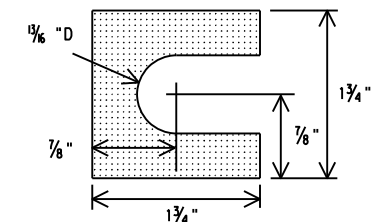


STIFFENER PLATE
DETAIL



FOUNDATION DETAIL

*Note: For signs with electrical apparatus, see ED(10) for conduit required in foundation.

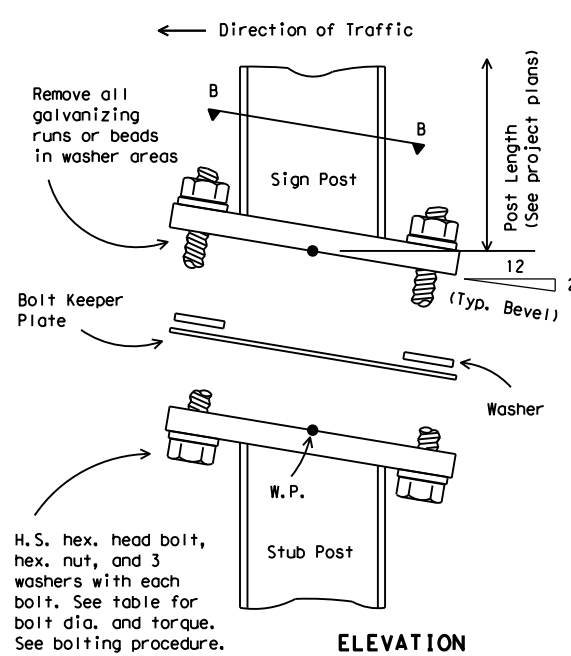


SHIM DETAIL

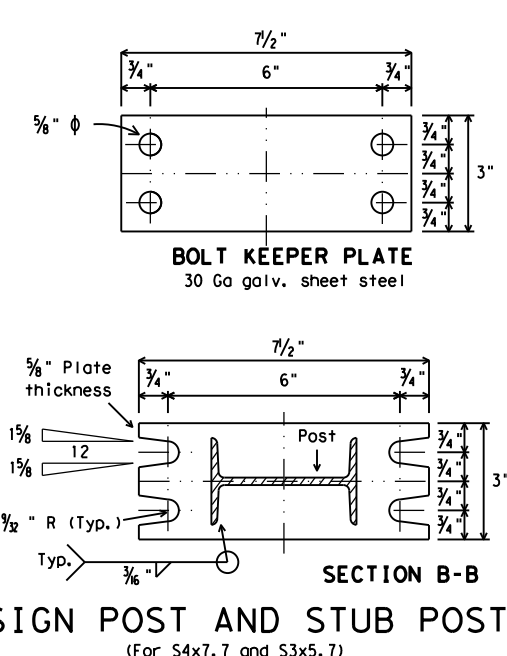
- BOLTING PROCEDURE FOR ASSEMBLY OF BASE CONNECTION:**
1. Assemble sign post, BOLT KEEPER PLATE and stub post with bolts and three flat washers per bolt as shown.
 2. Shim as required to plumb post.
 3. Tighten all bolts the maximum possible with a 12 to 15 inch wrench to clean bolt threads and to bed washers and shims.
 4. Loosen each bolt in sequence and retighten bolts in a systematic order to the prescribed torque. Do not over-tighten.
 5. To prevent nut loosening, burr threads of bolt at junction with nut using a center punch.

Dimensions Post Size	Base Connection Data Table										Perforated Fuse Plate Data Table							Bolt Keeper Data			Foundation Data								
	Bolt Size & Torque	A	B	C	D	E	t ₁	t ₂	W	R	F	G	J	K	M	d ₁	d ₂	t ₃	Bolt Dia.	Wt. (ea.) (lbs.)	Bolt length	P	S	U	Stub length	Stub projection	Dr. Shaft diameter	Bar V Size	
W6x9	5/8" φ × 2 3/4"										4 1/4"	2"	4"	2 1/4"	1"	9/16"	3/4"	1/4"	1/2"	1.01	1 1/2"	8 3/8"		9 7/8"	2'-0"	3"			#5
W6x12	440-450 inch pounds	5"	2"	1 1/4"	2 3/4"	1 1/8"	3/4"	1/2"	1/4"	1/32"	5"	2 1/2"	6"	3 1/2"	1 1/2"	1/16"	1/4"	3/8"	5/8"	2.51	2 1/4"	8 1/2"	1"	10"	2'-0"	3"			#5
W6x15	36-38 foot pounds										5"	2 1/2"	5 1/4"	2 3/4"	1 1/4"	1/16"	1/16"	3/8"	5/8"	2.26	2 1/4"	10 5/8"		12 1/8"	2'-6"	3"			#6
W8x18											5 1/2"	2 1/2"	5 1/4"	2 3/4"	1 1/4"	13/16"	1"	1/2"	3/4"	3.35	2 1/4"	11"		12 3/4"	3'-0"	2 1/2"			#7
W8x21	3/4" φ × 3 1/2"										6"	3"	5 3/4"	2 3/4"	1 3/8"	13/16"	1 1/8"	1/2"	3/4"	4.03	2 1/4"	12 7/8"	1 1/2"	14 5/8"	3'-0"	2 1/2"			#8
W10x22	740-750 inch pounds	6"	2 1/4"	1 3/8"	3 1/2"	1 1/4"	1"	3/4"	5/16"	13/32"	6"	3"	6 1/2"	3 1/2"	1 5/8"	13/16"	1 5/16"	1/2"	3/4"	4.47	2 1/4"	15"		16 3/4"	3'-0"	2 1/2"			#9
W10x26	62-63 foot pounds										6"	3"	6 1/2"	3 1/2"	1 5/8"	13/16"	1 5/16"	1/2"	3/4"	4.47	2 1/4"	15"		16 3/4"	3'-0"	2 1/2"			#10
W12x26											6"	3"	6 1/2"	3 1/2"	1 5/8"	13/16"	1 5/16"	1/2"	3/4"	4.47	2 1/4"	15"		16 3/4"	3'-0"	2 1/2"			#11
S3x5.7	1/2" φ × 2 1/2"	See Detail Below										3 3/4"	1 1/2"	2 5/8"	1 1/2"	5/8"	9/16"	3/8"	1/4"	1/2"	0.60	1 1/2"	See Detail Below			3'-3 1/2"	3 1/2"	12"	Non-reinforced
S4x7.7	440-450 inch pounds	See Detail Below										3 3/4"	1 1/2"	2 5/8"	1 1/2"	5/8"	9/16"	3/8"	1/4"	1/2"	0.60	1 1/2"	See Detail Below			3'-3 1/2"	3 1/2"	12"	Non-reinforced

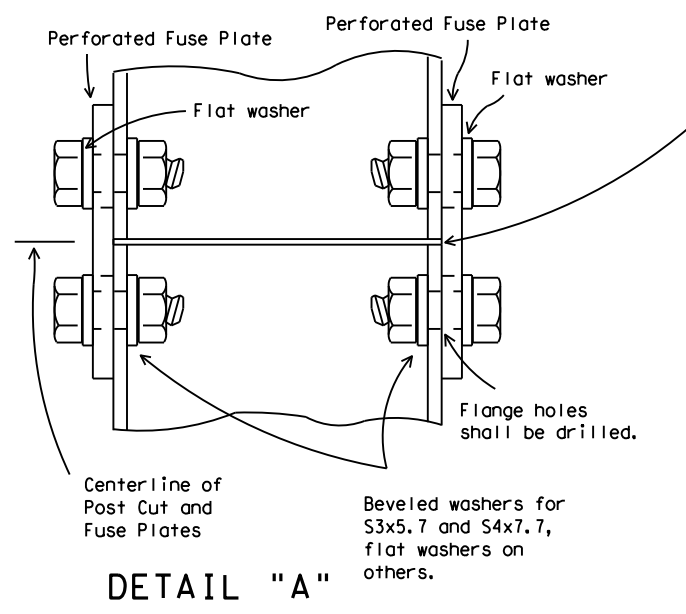
③ Foundation design shall be Type G Mount, see SMD (TY G).



ELEVATION



SIGN POST AND STUB POST
(For S4x7.7 and S3x5.7)



DETAIL "A"

PERFORATED FUSE PLATE DETAIL

Use H.S. hex head bolts, hex head nut and bevel or flat washer (where req'd) under nut. All holes shall be drilled, sub-punched and reamed. All plate cuts shall preferably be saw cuts. However, flame cutting will be permitted provided all edges are ground. Metal projecting beyond the plane of the plate face will not be permitted. Steel fuse plates shall conform to the requirements of ASTM A36. ASTM A572 Grade 50 or ASTM A588 may be substituted for A36 at the option of the fabricator. Mill test reports shall be submitted for Fuse Plates. Steel used shall have an ultimate tensile strength not to exceed 80 KSI. For alternative Fuse Plate contact Traffic Operations Division.

Texas Department of Transportation
Traffic Operations Division

**SIGN MOUNTING DETAILS-
LARGE ROADSIDE SIGNS
FOUNDATION & STUB**

SMD(2-2)-08

© TxDOT August 1995		DN: TxDOT	CK: TxDOT	DW: TxDOT	CK: TxDOT
4-98	REVISIONS	CONT	SECT	JOB	HIGHWAY
9-08		DIST	COUNTY	SHEET NO.	