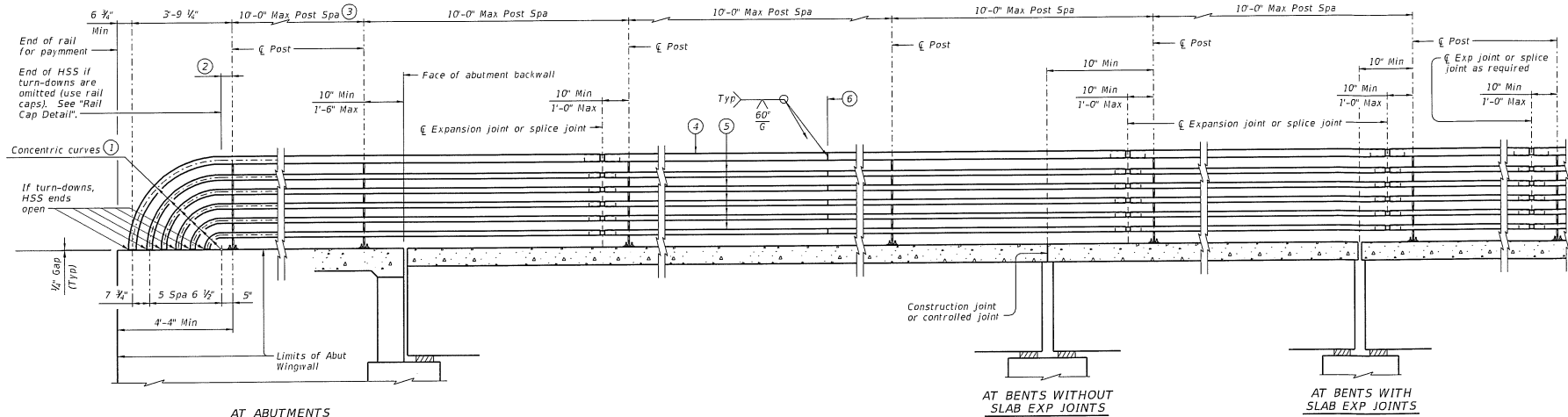


DISCLAIMER: The use of this standard is governed by the Texas Engineering Practices Act. No warranty of any kind is made by the Department of Transportation or its employees for the use of this standard or for the results of its use. The user assumes full responsibility for the use of this standard to other formats or for incorrect results or damages resulting from its use.

DATE: FILE:

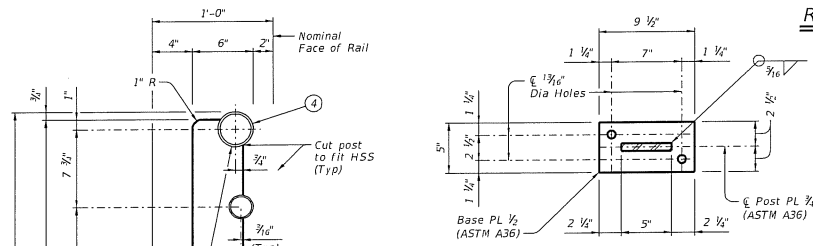


AT ABUTMENTS

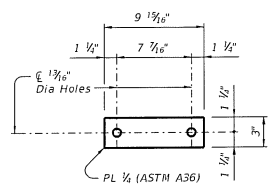
AT BENTS WITHOUT SLAB EXP JOINTS

AT BENTS WITH SLAB EXP JOINTS

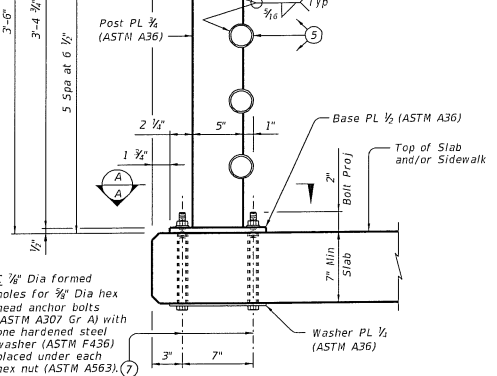
ROADWAY ELEVATION OF RAIL



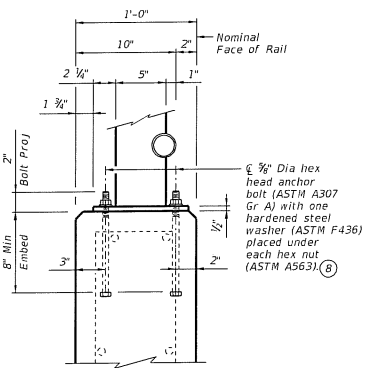
SECTION A-A
Showing base plate detail.



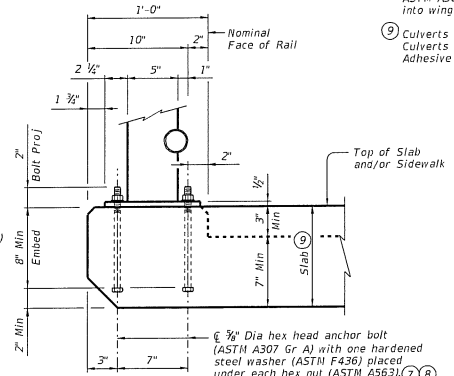
WASHER PLATE DETAIL



ON BRIDGE SLAB



ON ABUTMENT WINGWALLS OR CIP RETAINING WALLS



ON CULVERTS WITH OR WITHOUT CURBS

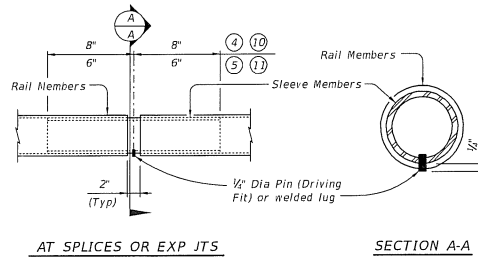
Used with 1'-0" Min thick parallel wings on culverts.

- ① Portion of railing with turn-downs to be used or omitted as indicated on Bridge Layout.
- ② 10" Min - 1'-6" Max if turn-downs are omitted.
- ③ Min of 2 posts required on wingwall.
- ④ HSS 3.500 x 0.216 (Rail Member)
- ⑤ HSS 2.375 x 0.154 (Rail Member)
- ⑥ One shop splice per panel is permitted (with minimum 85 percent penetration). The weld may be square groove or single vee groove. Grind smooth.
- ⑦ At Contractor's option, adhesive anchors may be used. Adhesive anchors must be 3/4" Dia ASTM A307 Grade A fully threaded rods. Minimum adhesive anchor embedment depth is 5" into slabs or culverts without curbs. See "Material Notes" for adhesive anchor requirements.
- ⑧ At Contractor's option, adhesive anchors may be used. Adhesive anchors must be 3/4" Dia ASTM A307 Grade A fully threaded rods. Minimum adhesive anchor embedment depth is 7" into wingwalls or culverts with curbs. See "Material Notes" for adhesive anchor requirements.
- ⑨ Culverts without curbs for cast-in-place anchor bolts require a 10" Min slab thickness. Culverts with curbs for cast-in-place anchor bolts require a curb plus slab thickness of 10" Min. Adhesive anchors may be used with a 7" Min slab thickness or culverts with curbs.

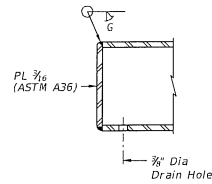
		Bridge Division Standard	
<h2>PEDESTRIAN RAIL</h2>			
<h3>TYPE PRI1</h3>			
FILE	11st1028-18.dwg	DATE	EX. DATE
DESIGNED BY	March 2013	CONV. SECT.	NOB
REVISIONS		NO. OF	DESCRIPTION
		DATE	BY

DISCLAIMER: This standard is approved by the Texas Engineering Practices Act. No warranty of any kind is made by TxDOT for any purpose whatsoever. TxDOT assumes no responsibility for the conception or this standard to other formats or for incorrect results or damages resulting from its use.

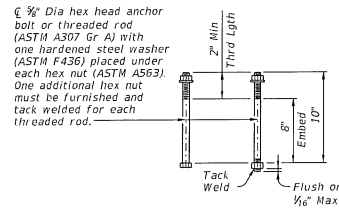
DATE: FILE:



AT SPLICES OR EXP JTS SECTION A-A
PIPE SPlice DETAIL



RAIL CAP DETAIL



CAST-IN-PLACE & FORMED HOLE ANCHOR BOLT OPTIONS

- ④ HSS 3.500 x 0.216 (Rail Member)
- ⑤ HSS 2.375 x 0.154 (Rail Member)
- ⑩ HSS 2.875 x 0.203 (Sleeve Member)
- ⑪ HSS 1.900 x 0.145 (Sleeve Member)

CONSTRUCTION NOTES:
 Panel lengths of railing must be attached to a minimum of three posts except at abutment wingwalls.
 At the Contractor's option anchor bolts may be an adhesive anchorage system. See "Material Notes".
 Test adhesive anchors in accordance with Item 450.3.3, "Tests". Test 3 anchors per 100 anchors installed. Perform corrective measures to provide adequate capacity if any of the tests do not meet the required test load. Repair damage from testing as directed.
 Face of rail and posts must be vertical transversely unless otherwise approved. Posts must be perpendicular to adjacent roadway grade. Use Type VIII epoxy mortar under post base plates if gaps larger than 1/8" exist.
 For curved railing applications, fabricate the HSS rail to the radius when the radius is 600' or less. Submit shop drawings for approval when tubes are required to be fabricated to a radius. Shop drawings must be submitted to the Engineer for approval.
 Round or chamfer all exposed edges of steel components 1/16" by grinding prior to galvanizing.

MATERIAL NOTES:
 Provide ASTM A500 Gr B, A1085 or A53 Gr B for all HSS.
 Galvanize all metal components of steel rail system. Apply additional coatings when shown elsewhere on the plans. When plans require paint over galvanizing, follow the requirements for painting galvanized steel in Item 445, "Galvanizing" and when field painting, Item 446, "Field Cleaning and Painting Steel". Sleeve members and anchor bolts must receive galvanization prior to installation and only field paint after installation unless directed otherwise by Engineer.
 Anchor bolts must be 3/8" Dia ASTM A307 Gr A with one hardened steel washer (ASTM F436) placed under each hex nut or ASTM A307 Gr A threaded rods with one tack welded hex nut each and with one hex nut with one hardened steel washer (ASTM F436) each. Nuts must conform to ASTM A563 requirements.
 Optional adhesive anchorage system must be 3/8" Dia ASTM A307 Gr A fully threaded rods with one hex nut and one hardened steel washer (ASTM F436). Nuts must conform to ASTM A563 requirements. Embed fully threaded rods into slab, wingwalls, or culvert curbs using a Type III, Class C, D, E, or F anchor adhesive. Anchor adhesive chosen must be able to achieve a nominal bond strength in tension, f_a , of a single anchor of 10 kips (edge distance must be accounted for). Submit signed and sealed calculations or the manufacturer's published literature showing the proposed anchor adhesive's ability to develop this load to the Engineer for approval prior to use. Anchor installation, including hole size, drilling, and clean out, must be in accordance with Item 450, "Railing".

GENERAL NOTES:
 Designed according to AASHTO LRFD Specifications.
 Do not use this railing on bridges with expansion joints providing more than 5" movement.
 Rail anchorage details shown on this standard may require modification for select structure types. See appropriate details elsewhere in plans for these modifications.
 For all rails, submit erection drawings showing section lengths, splice locations, rail post spacing and anchor bolt setting for approval. Average weight of railing is 30 plf.

PEDESTRIAN RAIL			
TYPE PRII			
FILE: r1st0228-18.dgn	DR: TAR	CK: TBE	DN: JFR
DATE: March 2018	CONF: SECT	NO: 100	ISSUE NO: 1
REVISIONS		DATE	SHEET NO.