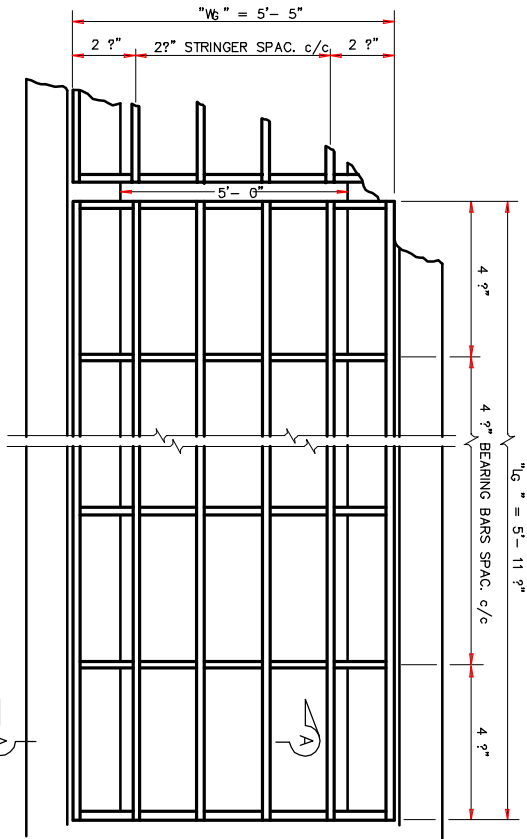


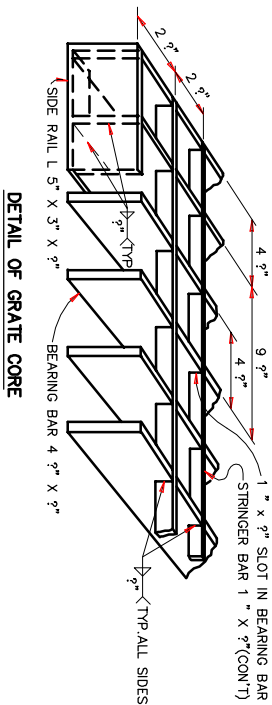
STRUCTURAL STEEL FOR ONE TY. 6 TRAFFIC GRATE

GRADE DIMENSION OUT TO OUT	SIDERAIL		BEAR BAR		STRINGER		TOTAL WEIGHT					
	LG	WG	NO.	LGTH.	NO.	LGTH.		LBS.				
5'-11"	7'-5"	5"	2	5'-11"	162	16	5'-4"	653	27	5'-11"	205	1020

- GENERAL NOTES:
- QUANTITIES SHOWN ARE FOR CONTRACTOR'S INFORMATION ONLY.
  - WHEN THE GRATE IS PART OF A "COMPLETE" INLET, IT WILL BE SUBSIDIARY TO THE INLET.
  - WHEN THE GRATE IS NOT PART OF A "COMPLETE" INLET, IT WILL BE PAID FOR BY THE "EACH".



TRAFFIC GRATE PLAN VIEW



DETAIL OF GRATE CORE

NOTE: THIS GRATE IS USED WITH TYPE W-1 THRU W-5 TRAFFIC INLETS.

TYPE 6  
 TRAFFIC GRATE

SAN ANTONIO DISTRICT STANDARD

© 1998 Texas Department of Transportation

DATE	6	DRAWN	
STATE	TEXAS	CHECKED	
COUNTY	SAT	DESIGNED	
CONTRACT NO.		NO.	
SECTION		NO.	
JOB		NO.	
PROJECT NO.		NO.	